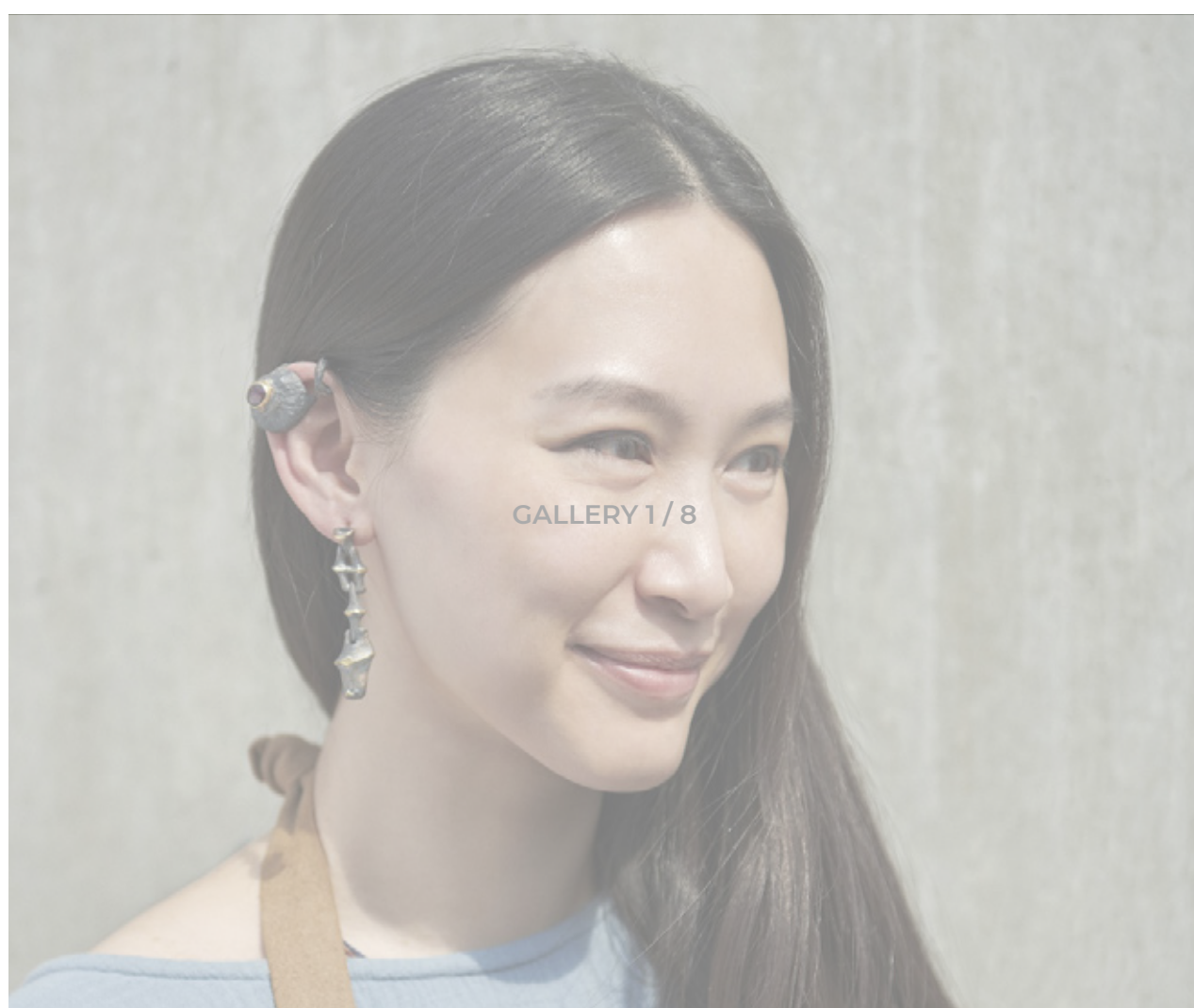


STORIES - STYLE

Weinan Pan, the Nomadic Princess

By Tommaso Lavizzari June 22, 2020



The jewelry designer of Chinese origins, Weinan Pan, has created a modern collection inspired by the talismans of nomadic people, entirely handmade.



Designed and handcrafted in London, Weinan Pan's uni-sex Nomadic Princess jewelry collection combines silver with gold; it looks unrefined or unpolished, symbolizing nomadic travel in various extreme environments and circumstances.



The ancestry of the ancient Kitai Nomad

Pan's family ancestry can be traced back to the ancient Kitai Nomad. They inhabited areas corresponding to Heilongjiang Province, the most northeastern region of China, on the border with Mongolia and Siberia. The artist was introduced to Tibetan Buddhism at a very early age through her parents and Tibetan master monks.

Since then, she has been fascinated by Himalayan culture and nature, which influence her aesthetics and are present in all her creations.

Like her ancestors, Weinan travels relentlessly collecting experiences, artifacts, and talismans, facing a real nomadic journey to reunite spiritually with nature.

The journey of Weinan Pan

Pan's journey, which lasted over two years, began in Tibet, where she traveled through the Base Camp of Mount Everest and continued in the Swiss Alps to the Scottish Highlands. From the search for the nomadic lifestyle in extreme conditions, Pan found an answer on how to remain peaceful and authentic despite the obstacles, following the rules of nature and the wisdom of living in the moment.



Weinan Pan's creations continue to change with time. Silver, which constitutes the main material of her jewelry, is constantly changing due to the effects of the elements and oxidation. For Pan, this represents a sense of satisfaction achieved through honest reflection and appreciation for those who have really put themselves at stake.

The collection Nomadic Princess encourages people to appreciate the imperfections as parts of natural beauty because the appearance of jewelry will continue to change with time and wear.

The designer also firmly believes in the environmental and social contribution and therefore uses only recycled silver, gold, and ethically sourced gemstones. Project Nomadic Princess has also been selected for the 2019 edition of the Tiffany & Co. x Outset Studio makers Prize.